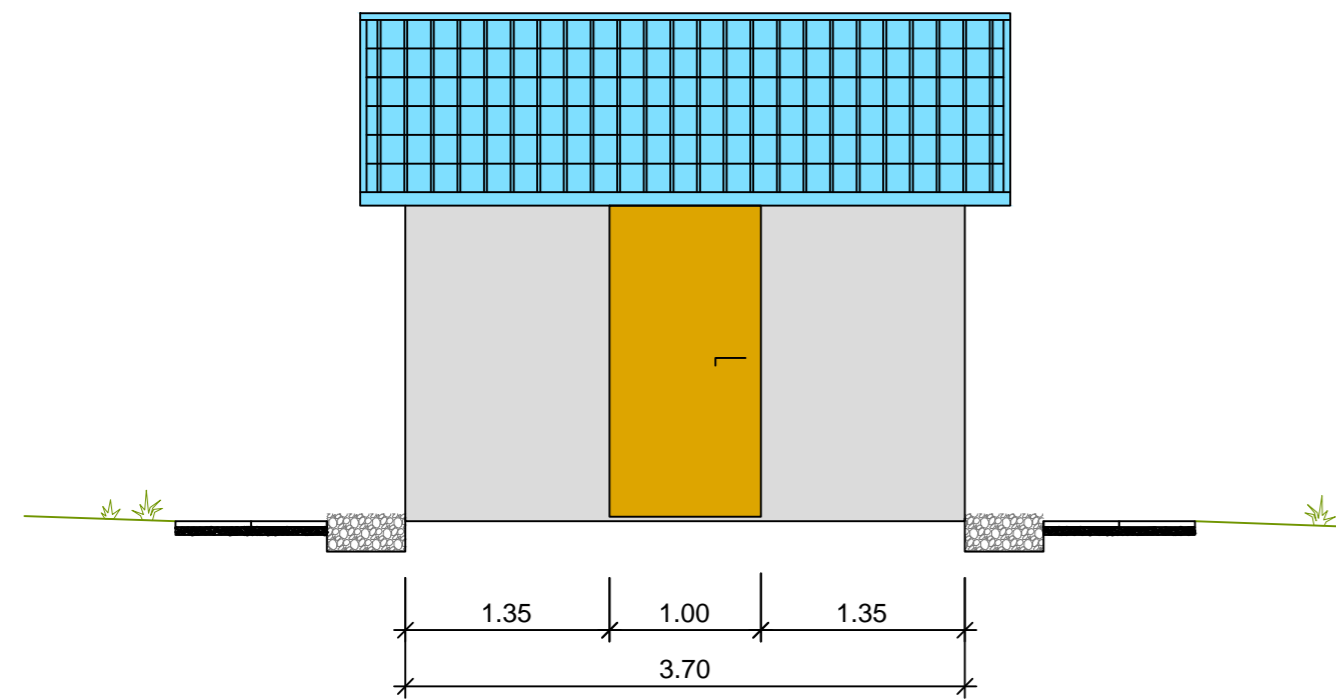
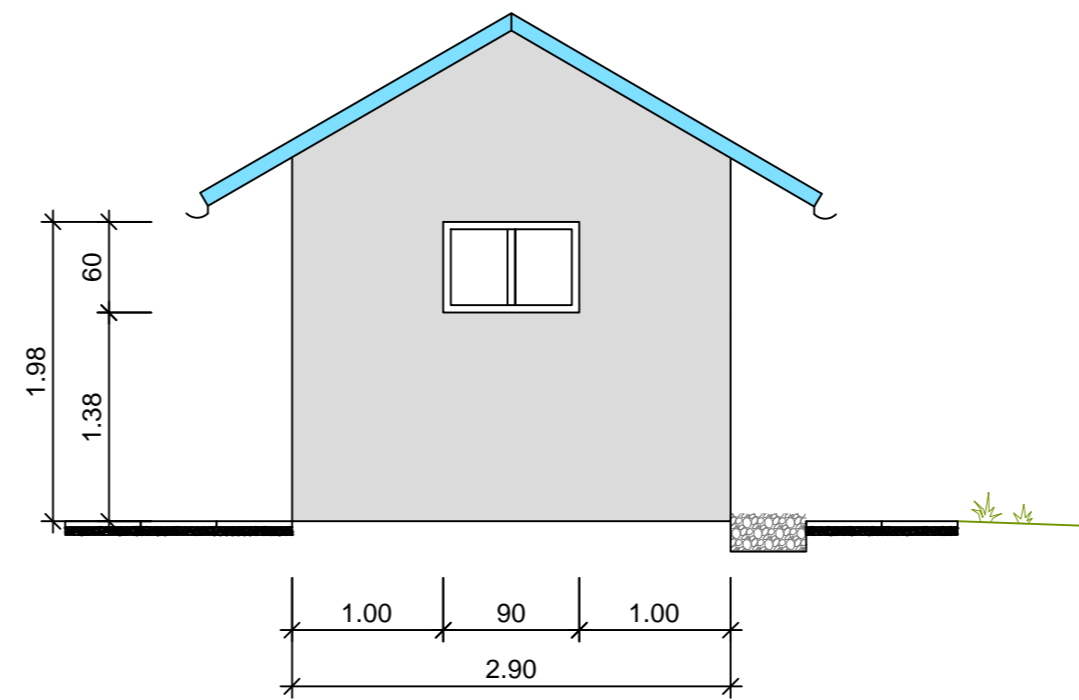


**Front view**



**Side view**



**Legend**

- Fassade (brick work with a mortar finish and painting)
- Roof covering with tiles
- Door (wood or aluminium)
- 11 Indication of dimensions in cm
- 1.00 Indication of dimensions in m

**ApaSan - Swiss Water and Sanitation Project Moldova**

Reference Designs for Rural Water Supply Systems

Project Plan

**Pumping Station  
Front and Side View**

**CSDENGINEERS+**  
INGENIOUS BY NATURE

CSD Ingénieurs SA  
Chantemerle 37 - Granges-Paccot  
CP 384, CH-1701 Fribourg  
t 026 460 74 74  
f 026 460 74 79  
e fribourg@csd.ch  
www.csd.ch

**DRAFT**

**skat** Swiss Resource Centre and  
Consultancies for Development

|   |           |            |            |                |
|---|-----------|------------|------------|----------------|
| Scale                                   |           |            |            | 1:50           |
| Drawn                                   |           |            |            | APR/01.04.2015 |
| Checked                                 |           |            |            | APS/01.04.2015 |
| Revision No.                            |           |            |            | -              |
| Format [cm]                             |           |            |            | 30X63          |
| Project No.                             | Phase     | Plan - No. | Index      |                |
| <b>EX00118</b>                          | <b>02</b> | <b>04</b>  | <b>1/6</b> |                |
| file: EX00118_04_02_Pumping_Station.dwg |           |            |            |                |